



Type

S/Section

RENAULT All Types

XXX X

83

83 FAULT FINDING - INSTRUMENT PANELS

- Engine : XXX
- Gearbox : XXX

Basic Manual : NT 2863A

In Charts 7 and 8 of Technical Note 2863A, please read "speedometer" instead of "rev counter" and the values should be shown in "km/h" instead of "rpm".

Please note this information and affix Chart 7 in place of page 83-11 and Chart 8 in place of page 83-12 of Technical Note 2863A.

"The repair methods given by the manufacturer in this document are based on the technical specifications current when it was prepared.

The methods may be modified as a result of changes by the manufacturer in the production of the various component units and accessories from which his vehicles are constructed".

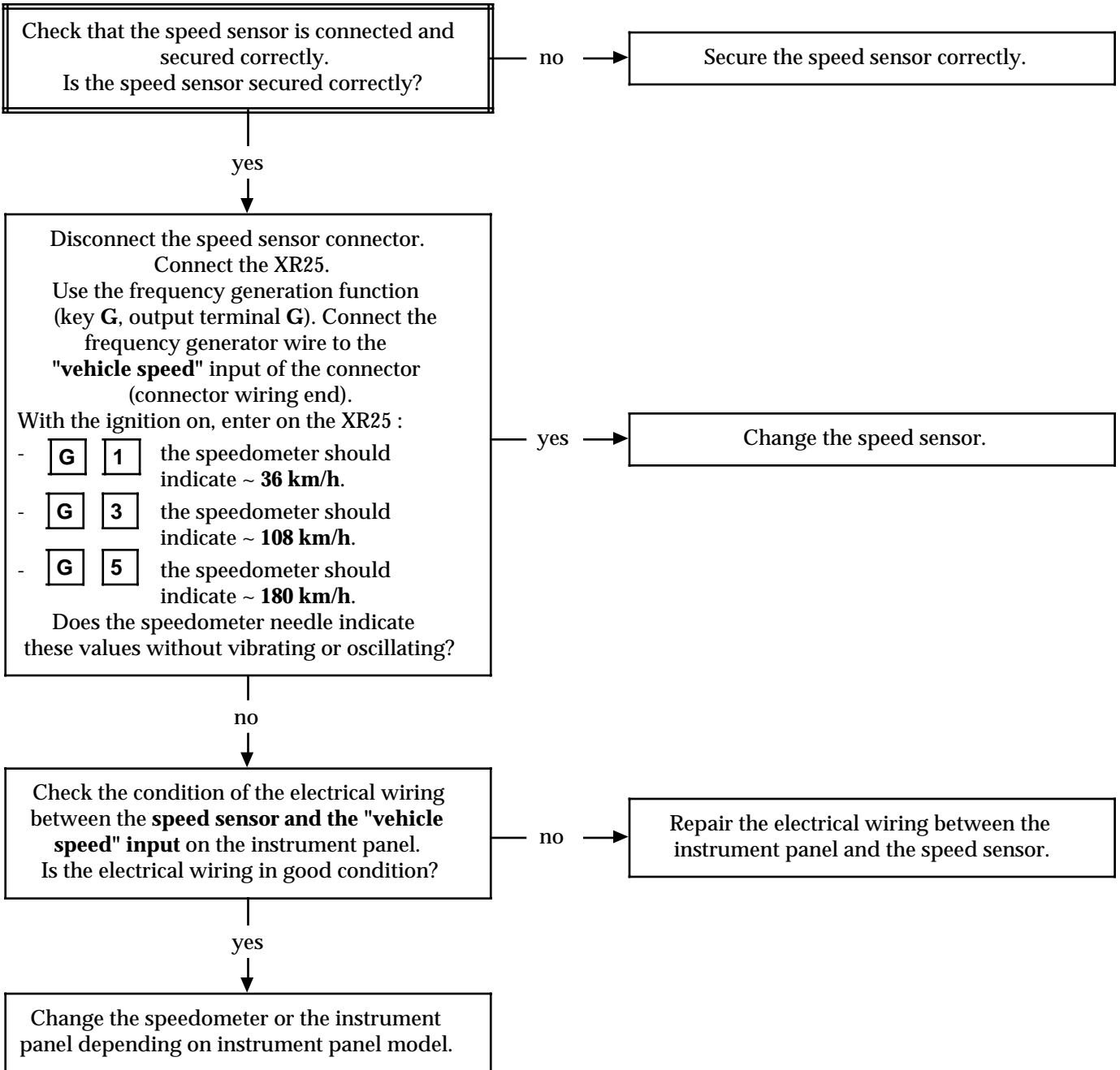
All copyrights reserved by Renault.

Copying or translating, in part or in full, of this document or use of the service part reference numbering system is forbidden without the prior written authority of RENAULT.

FAULT FINDING CHARTS

CHART 7	SPEEDOMETER PROBLEM (vehicles fitted with an electric speedometer). Needle vibrates or oscillates or no needle movement and total mileage recorder does not operate.
----------------	--

NOTES	Check that the system connectors are engaged correctly. Take care not to damage the connectors during checks.
--------------	--

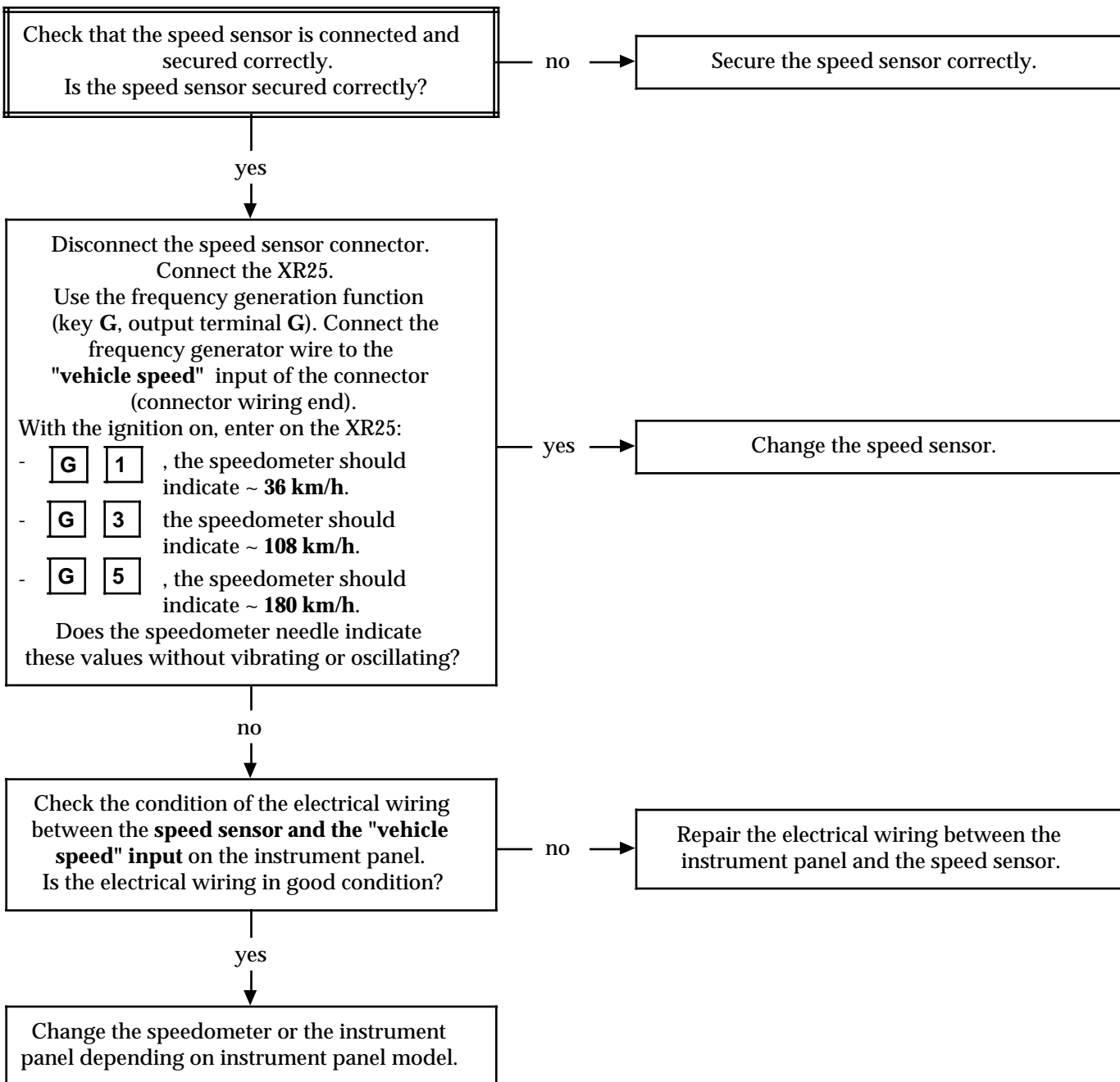


AFTER REPAIR	Adjust the various instrument panel functions (clock, etc...) if necessary. Check that all the instrument panel functions operate correctly.
---------------------	---

FAULT FINDING CHARTS

CHART 8	SPEEDOMETER PROBLEM (vehicles fitted with an electric speedometer). No needle movement, but total mileage recorder operates or needle movement correct but total mileage recorder does not operate.
----------------	---

NOTES	Check that the system connectors are engaged correctly. Take care not to damage the connectors during checks.
--------------	--



AFTER REPAIR	Adjust the various instrument panel functions (clock, etc...) if necessary. Check that all the instrument panel functions operate correctly.
---------------------	---